



Tri-Sorb™ XL Series  
MERV 8 Molecular  
Pleated Filters

# Tri-Sorb™ XL Series

## When clean air is critical

### FEATURES

- Available in high, medium and light-duty models
- 32 mesh carbon utilized
- MERV 8 particulate efficiency
- Up to 335 grams of carbon per sq. ft. of filter face
- Moisture resistant, 100% reclaimed fiber die-cut frame
- Low resistance - as low as 0.28 "W.G. at 500 FPM
- Quality-controlled manufacturing facility



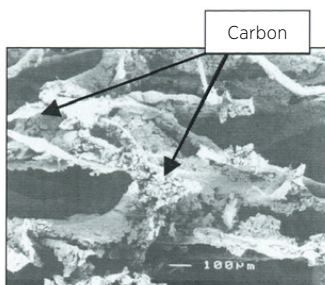
### MEDIA

'Typical' carbon pleats use a slurry media that mixes adhesive and carbon dust and is attached to a polyester blend media. The result is very little of the carbon is exposed due to the adhesive. Thus, it is very limited in the amount of gases it can capture.

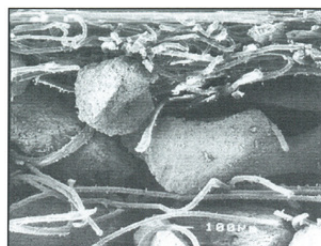
XL (Extended Life) media uses a fiber-to-carbon bonding that requires no adhesive. This allows virtually the entire carbon surface to be available to capture gases. In addition, the XL media is a combination media that offers MERV 8 particulate efficiency.

### CARBON MESH SIZE

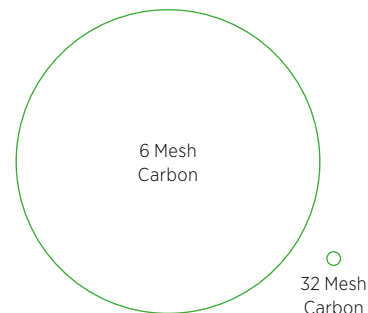
Most 'high-level' carbon filters contain granulated carbon that is 6-mesh particle size (3.35 mm); our XL media utilizes carbon that is 32-mesh (0.165 mm) in size. If you think bigger is better consider this - on a penetration of 5% only 27% of the 6-mesh carbon volume is consumed on our 32-mesh carbon the same penetration equals 96% of the carbon used. It takes more than 300 of the 32 mesh particles to equal one 6-mesh - this gives you six times the outside surface area which makes our XL media more effective.



Slurry media



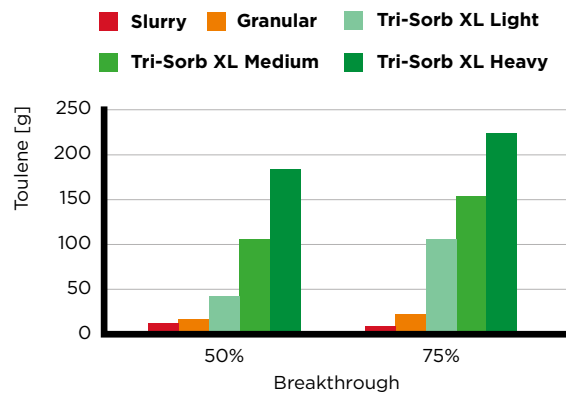
Extended life media



Carbon mesh size illustration

# Tri-Sorb™ XL Series

## When clean air is critical



### THE RESULTS

Simply put the bottom line is performance. How much of your VOCs and odors do you want to remove, a good target is 50% removal, also called a breakthrough point. True carbon filter life is measured not by the weight of the carbon in the filter but by the quantity of gases a filter can remove before reaching the breakthrough point.

As you can see the graph on the right at both 50% and 75% breakthrough Tri-Dim's XL media dramatically outperforms traditional slurry media as well as higher end granular medias. In addition to longer life, the XL media offers MERV 8 performance per ASHRAE 52.2 on particulate.

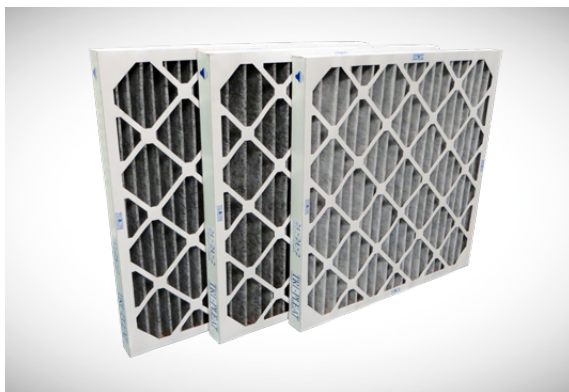
### AVAILABLE IN THREE GRADES

Tri-Sorb XL is available in three distinct grades - Heavy Duty, Medium Duty and Light Duty to match the demands of your applications. The Heavy Duty has the maximum amount of media and the highest carbon loading with 225 grams of carbon per square foot of filter face area in a two-inch deep filter. The Medium Duty has 150 grams of carbon per square foot of filter face area in a two-inch deep filter and the Light Duty offers 140 grams of carbon per square foot of filter face area in a two-inch deep filter offering options for less demanding applications.

### CONSTRUCTION

Tri-Sorb XL utilizes a moisture resistance die-cut frame with diagonal supports bonded to the media pack for extra strength and to maintain proper pleat spacing.

The pleat pack is bonded to a two piece frame. In addition, the four-inch deep filters also use additional cardboard 'fingers' for additional strength and stability. All Tri-Pleat die cut frames are treated with an Aqua Coat treatment for added moisture resistance.



#### Left to Right

Tri-Sorb XL Heavy Duty, Medium Duty and Light Duty

# Tri-Sorb™ XL Series

## Technical Data

### PRODUCT SPECIFICATIONS

<b>Media</b>	Synthetic with 32-mesh carbon
<b>Frame</b>	100% reclaimed fiber moisture resistant die-cut
<b>Final resistance</b>	1.0 "W.G. (249 Pa)
<b>Resistance @ 500 FPM</b>	
<b>Light Duty Series</b> 1" deep 2" deep 4" deep	0.48 "W.G. (119 Pa) 0.45 "W.G. (112 Pa) 0.38 "W.G. (95 Pa)
<b>Medium Duty Series</b> 2" deep 4" deep	0.57 "W.G. (142 Pa) 0.32 "W.G. (80 Pa)
<b>Heavy Duty Series</b> 2" deep 4" deep	0.41 "W.G. (102 Pa) 0.28 "W.G. (70 Pa)
<b>Approx. grams of carbon</b> (per 1.0 sq. ft of filter face area)	
<b>Light Duty Series</b> 1" deep 2" deep 4" deep	40 g/sq. ft. 75 g/sq. ft. 140 g/sq. ft.
<b>Medium Duty Series</b> 2" deep 4" deep	150 g/sq. ft. 275 g/sq. ft.
<b>Heavy Duty Series</b> 2" deep 4" deep	225 g/sq. ft. 335 g/sq. ft.
<b>Particulate efficiency</b> (per ASHRAE 52.2)	MERV 8

### LOCAL REPRESENTATIVE

Tri-Dim Filter Corporation is committed to continual product development - all descriptions, specifications and performance data are subject to change without notice. Tri-Dim products are manufactured to exacting criteria - there can be a ±5% variance in filter performance.